

Delivering
the power
of possibilities



the power of possibilities™



6

Designer Series



8

Metallic Series



10

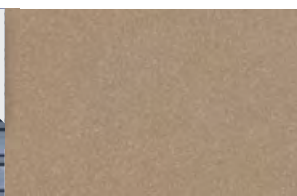
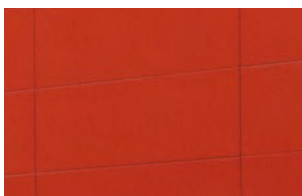
Modern Series

12

Wood Series

14

Concrete Series



We're looking forward



At Nichiha we think the future is bright

Every day more and more people are discovering the beauty and performance of Nichiha's fiber cement **Architectural Wall Panels**. Once you've seen or used a Nichiha product, you'll be looking for ways to use it again.

Your projects come in all shapes, markets and styles... at Nichiha we make an attractive fiber cement cladding solution for most of them. Our products help you capture the look of metal, block, stone, sandstone, brick and cedar in considerably less time and at a fraction of the cost. Our ever-expanding offering of textures and finishes takes buildings of all kinds to new and unexpected places.

16

KuraStone™ Series



18

Brick Series



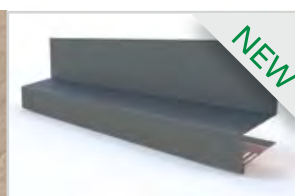
20

Masonry Series



22

Essential Flashing System



24

*Installation Hardware
& Trim*



The look you're after,
the performance we insist on.



Behind our Architectural Wall Panels is some SERIOUS TECHNOLOGY...



EASY INSTALLATION

Timesaving Clip Installation System that reduces construction time and minimizes mistakes.



NO MORTAR, NO MESS

Prefinished panels that eliminate the need for messy mortar or costly masonry-skilled labor.



ANY WEATHER PRODUCT

Products that can be installed year round in any climate across the country. No geographical restrictions means more possibilities.



PROTECTION

Backed by some of the best warranties in the industry. Strong 50-year limited warranty.



LOW MAINTENANCE

No-fuss products. Little ongoing cleaning or regular maintenance needed. You get to bring your vision to life and ensure it looks great for a long time.

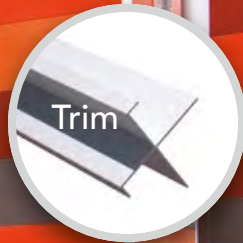


ENGINEERED FOR PERFORMANCE

Go beyond our durable panels and discover a meticulously engineered moisture management system that provides a vertical drainage point for air & moisture to exit.

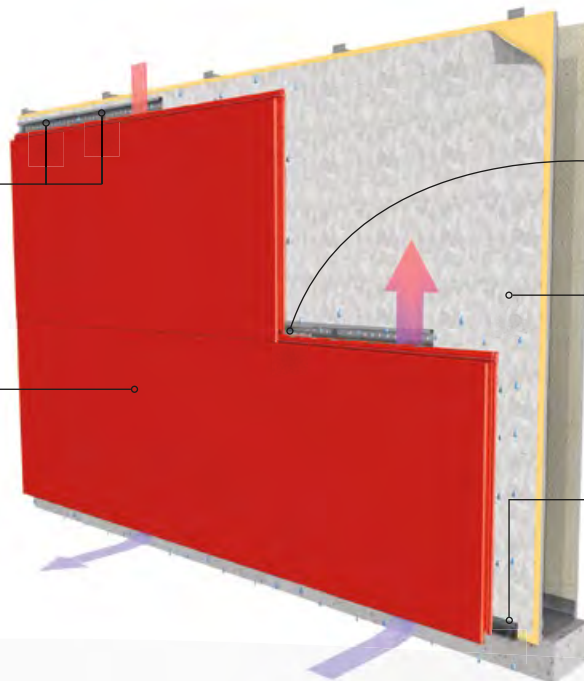
ADD THE FINISHING TOUCHES TO
YOUR NEXT PROJECT WITH OUR
ESSENTIAL FLASHING SYSTEM
ON PAGE 22!

MULTIPLE LOOKS. ONE SOURCE.



The Ultimate Clip
creates a hidden fastening system that all but eliminates face fastening. Installation is quick and easy and never requires specialty subcontractors.

Nichiha Architectural Wall Panels
are lightweight, easy to handle and available in a virtually endless color palette and a diverse offering of textural finishes. They're also backed with the industry's strongest warranty.



Nichiha's Joint Tab Attachment
is designed to support panel lateral stability, helping vertical joints stay tightly closed. The tab fits in place easily and is fastened to the Ultimate Clip with provided screw.

Drained and Back Ventilated Rainscreen
design allows water to escape and air to circulate, reducing the risk of mold and water damage inside the building.

The Ultimate Starter Track
pulls double-duty. It ensures a fast, level installation and its patented drainage channel directs water out and away from the base of the wall.

It's not what you think, it's Illumination

Some people see metal, others see masonry...
all we see is stunning



Nichiha's Illumination panels deliver sleek sophistication with ease

Sleek, bold, vibrant. These are the words industry professionals are using to describe Nichiha's **Illumination** fiber cement panel. Its smooth satin finish, easy installation and virtually limitless color pallet give you a degree of design freedom that most cladding products simply can't match. Delivering sleek sophistication comes naturally for Illumination. But don't let the pretty face fool you; there's more than meets the eye. Its fiber cement construction is backed by Nichiha's 50-year warranty. When compared to traditional aluminum composite and phenolic panels, Illumination delivers significantly more bang for far fewer bucks. Illumination panels add a splash of color and style to a wide array of projects:



Adding color and style to your projects has never been easier. Nichiha's **Color Xpressions System** for **Illumination** panels opens up a nearly limitless world of possibilities, backed by a 15-year color finish warranty.*

*See Nichiha warranties for detailed information on terms, conditions and limitations. Colors excluded for Illumination include black and nearly black.



ILLUMINATION

	6' PANEL	10' PANEL
PROFILE	LARGE 18" x 6' WITHOUT SCORE SMALL 18" x 6' WITH SCORE	
DIMENSIONS (NOM. FT. ~ ACTUAL MM)	18" [H] x 6' [L] (455MM [H] x 1,818MM [L])	18" [H] x 10' [L] (455MM [H] x 3,030MM [L])
THICKNESS (NOM. IN. ~ ACTUAL MM)	5/8 (16MM)	5/8 (16MM)
WEIGHT (LBS. PER PANEL)	35.2	57.2
WEIGHT (LBS. PER SQ. FT.)	3.9	3.8
EXPOSED COVERAGE (SQ. FT. PER PANEL)	9	15
PACKAGING (PIECES PER PACK)	2 [18 SQ. FT.]	2 [30 SQ. FT.]
	NOTE: CAN BE INSTALLED HORIZONTALLY	NOTE: CAN BE INSTALLED HORIZONTALLY OR VERTICALLY

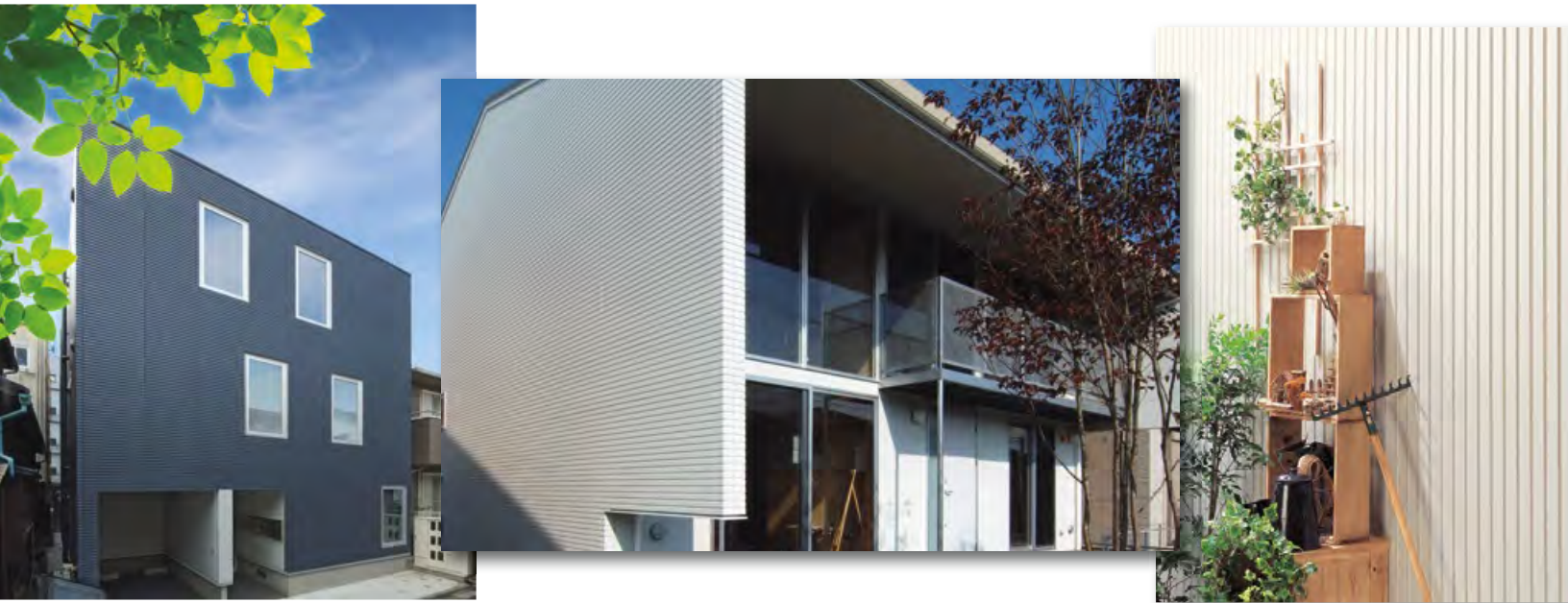
Unleash your inner rock star
with the METALLIC SERIES



Heavy metal is not just for the stage... it is also notorious for bringing walls to life

With its premium metallic finish and unique texture, our Ribbed Panel is the perfect complement to any project. The Ribbed Panel provides a great solution to break up a space and adds sophistication to the overall design aesthetic. It is perfect as an exterior or interior accent and its sleek look pairs well with modern materials such as block panels, glass and metal. The panel features a deluxe metallic finish that reflects light and creates the appearance of brushed, precious metals. The ribbed texture allows the panel to add interest and variation. The Ribbed Panel is easily installed with our time-saving clip installation system and hidden fasteners help maintain a clean design.

Are you ready to make a big, bold visual impact by utilizing the 3D qualities of the Ribbed Panel? It is sure to take center stage and stand out from the crowd. Turn up the volume and drama on your next project.



RIBBED™



MOTHER OF PEARL



GUNSMOKE


REV IT UP! ADD THE RIBBED PANEL TO YOUR NEXT FOCAL WALL.

RIBBED - NEW

10' PANEL

DIMENSIONS (NOM. FT. ~ ACTUAL MM)	18" [H] x 10' [L] (455MM [H] x 3,030MM [L])
THICKNESS (NOM. IN. ~ ACTUAL MM)	5/8 (16MM)
WEIGHT (LBS. PER PANEL)	57.3
WEIGHT (LBS. PER SQ. FT.)	3.8
EXPOSED COVERAGE (SQ. FT. PER PANEL)	15
PACKAGING (PIECES PER PACK)	2 [30 SQ. FT.]

NOTE: CAN BE INSTALLED HORIZONTALLY OR VERTICALLY
NOTE: THERE ARE 9 RIBS PER PANEL



The look you envisioned...
the Performance you hoped for

Get the clean lines you are after with
our Modern Series

Making modern possible with the power of fiber cement

The clean, modular look of Nichiha ArchitecturalBlock is a versatile choice for commercial and residential projects alike. Its cool modern tones and subtle seams are the perfect partner for gleaming glass, stainless steel or even paired with the warmth of wood. ArchitecturalBlock is a handsome, durable and cost-effective solution. The ease of installation and wide variety of corner options make it as popular with contractors as it is with clients.

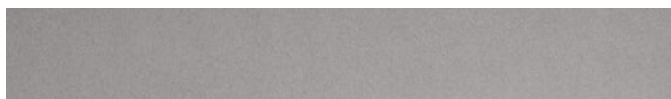
TuffBlock offers many of the same features as ArchitecturalBlock, but takes modern to the next level with its tough, textured finish. TuffBlock remains true to its name with a strong construction that is backed by the power of fiber cement. This product means business and is built to last. TuffBlock is perfect for use in heavy foot traffic areas as it remains looking pristine through whatever pedestrians throw its way.

MODERN DESIGN TIP:
ADD A TOUCH OF WARMTH TO YOUR
MODERN DESIGN WITH OUR WOOD SERIES.
LEARN MORE ON PAGE 12!



ARCHITECTURALBLOCK™

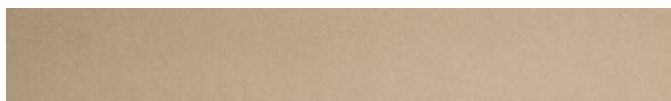
LARGE AND SMALL



GRAY



MOCHA



TUSCAN

TUFFBLOCK™

LARGE AND SMALL



STEEL



BAMBOO



WALNUT



PEWTER



PANEL ALSO AVAILABLE WITH SCORE

ArchitecturalBlock and TuffBlock are also available with an optional score in the middle of the panel. The distinctive deep score mark gives the impression of 3-ft panels for a decidedly different appearance from the standard panel.

ARCHITECTURALBLOCK™

PROFILE	LARGE 18" x 6' WITHOUT SCORE SMALL 18" x 6' WITH SCORE
DIMENSIONS (NOM. FT. ~ ACTUAL MM)	18" [H] x 6' [L] (455MM [H] x 1,818MM [L])
THICKNESS (NOM. IN. ~ ACTUAL MM)	5/8 (16MM)
WEIGHT (LBS. PER PANEL)	35.2
WEIGHT (LBS. PER SQ. FT.)	3.9
EXPOSED COVERAGE (SQ. FT. PER PANEL)	9
PACKAGING (PIECES PER PACK)	2 [18 SQ. FT.]

*APPEARANCE AND TEXTURE MAY VARY BY COLOR

TUFFBLOCK™

PROFILE	LARGE 18" x 6' WITHOUT SCORE SMALL 18" x 6' WITH SCORE
DIMENSIONS (NOM. FT. ~ ACTUAL MM)	18" [H] x 6' [L] (455MM [H] x 1,818MM [L])
THICKNESS (NOM. IN. ~ ACTUAL MM)	5/8 (16MM)
WEIGHT (LBS. PER PANEL)	35.2
WEIGHT (LBS. PER SQ. FT.)	3.9
EXPOSED COVERAGE (SQ. FT. PER PANEL)	9
PACKAGING (PIECES PER PACK)	2 [18 SQ. FT.]

Warmth, Sophistication, Endurance... *What more could you ask for?*



Get the natural look of wood with the unmatched durability of fiber cement.

Nichiha provides the look of wood without the drawbacks of natural wood cladding. Built to last, our VintageWood and RoughSawn offer the rich textures of wood while providing color stability and withstanding extreme weather elements. VintageWood exudes modern refinement and works well in both modern and vintage designs. With its earthy appeal, RoughSawn adds rustic sophistication to any contemporary project. Both products pair perfectly with glass, metal and block panels, adding a touch of warmth to the coolness of these materials.

VintageWood and RoughSawn are as versatile as they are durable. Our **Wood Series** panels can install both vertically and horizontally and can be used in interior and exterior settings. Hidden fasteners provide a clean and beautiful look. Creating the perfect match, Nichiha gives you the beauty of wood backed by the brawn of fiber cement.



VINTAGEWOOD™



BARK



CEDAR

VINTAGEWOOD™*

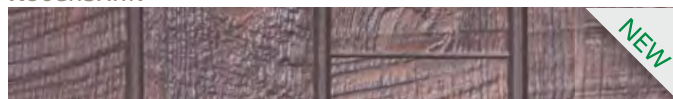
DIMENSIONS (NOM. FT. ~ ACTUAL MM)	18" [H] x 10' [L] (455MM [H] x 3,030MM [L])
THICKNESS (NOM. IN. ~ ACTUAL MM)	5/8 (16MM)
WEIGHT (LBS. PER PANEL)	57.3
WEIGHT (LBS. PER SQ. FT.)	3.8
EXPOSED COVERAGE (SQ. FT. PER PANEL)	15
PACKAGING (PIECES PER PACK)	2 [30 SQ. FT.]

NOTE: CAN BE INSTALLED HORIZONTALLY OR VERTICALLY

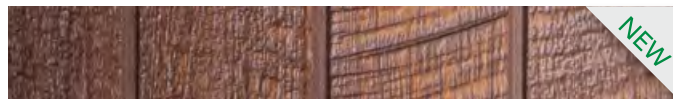


**GOOD DESIGN
AWARD WINNER**

ROUGHSAWN™



ESPRESSO



TOBACCO



SMOKE

ROUGHSAWN™* - NEW

DIMENSIONS (NOM. FT. ~ ACTUAL MM)	18" [H] x 10' [L] (455MM [H] x 3,030MM [L])
THICKNESS (NOM. IN. ~ ACTUAL MM)	5/8 (16MM)
WEIGHT (LBS. PER PANEL)	57.3
WEIGHT (LBS. PER SQ. FT.)	3.8
EXPOSED COVERAGE (SQ. FT. PER PANEL)	15
PACKAGING (PIECES PER PACK)	2 [30 SQ. FT.]

NOTE: CAN BE INSTALLED HORIZONTALLY OR VERTICALLY

TAKE A DEEPER DIVE INTO OUR WOOD SERIES AT [NICHHA.COM/WOODYOU](https://www.nichiha.com/woodyou)

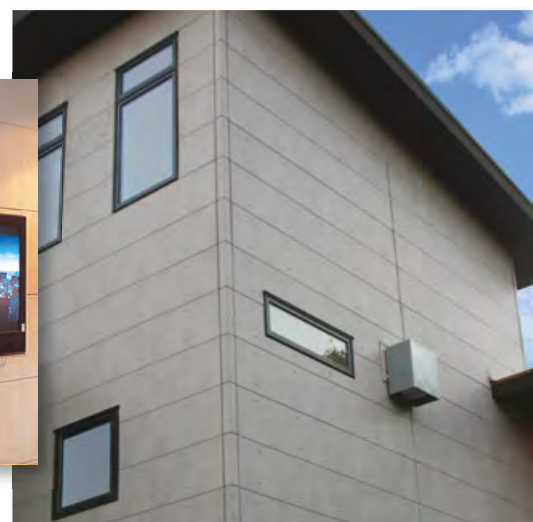
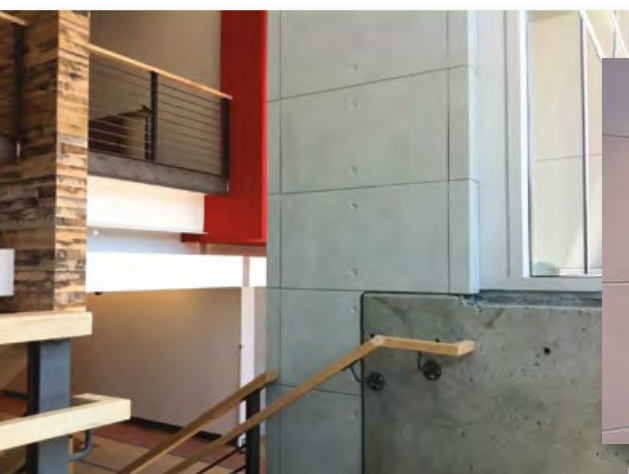
The Concrete Series...
Perfectly imperfect in every way



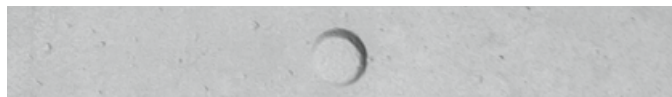
IndustrialBlock and EmpireBlock put a fresh face on industrial chic.

Backed by the power of fiber cement, IndustrialBlock offers a distressed concrete design with all the irregularities and characteristics of natural concrete. IndustrialBlock can pair with a wide range of products and its fresh approach works in both modern and vintage settings. The lightweight panels install vertically and horizontally, covering 15 square feet per panel.

EmpireBlock delivers the look and feel of precast concrete block in a more versatile and easier to use format. Perfect for indoor environments as well as exterior cladding, you will never have to worry about curing times, cracking or color inconsistency.



EMPIREBLOCK™

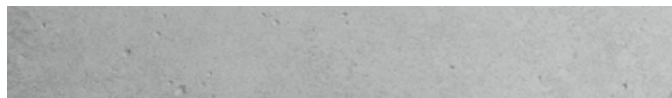


EMPIREBLOCK™*

DIMENSIONS (NOM. FT. ~ ACTUAL MM)	18" [H] x 10' [L] (455MM [H] x 3,030MM [L])
THICKNESS (NOM. IN. ~ ACTUAL MM)	5/8 (16MM)
WEIGHT (LBS. PER PANEL)	57.3
WEIGHT (LBS. PER SQ. FT.)	3.8
EXPOSED COVERAGE (SQ. FT. PER PANEL)	15
PACKAGING (PIECES PER PACK)	2 [30 SQ. FT.]

NOTE: CAN BE INSTALLED HORIZONTALLY OR VERTICALLY

INDUSTRIALBLOCK™



**WANT THE CONCRETE LOOK
WITHOUT THE DIMPLES?
CHECK OUT OUR
INDUSTRIALBLOCK PANEL.**

INDUSTRIALBLOCK™*

DIMENSIONS (NOM. FT. ~ ACTUAL MM)	18" [H] x 10' [L] (455MM [H] x 3,030MM [L])
THICKNESS (NOM. IN. ~ ACTUAL MM)	5/8 (16MM)
WEIGHT (LBS. PER PANEL)	57.3
WEIGHT (LBS. PER SQ. FT.)	3.8
EXPOSED COVERAGE (SQ. FT. PER PANEL)	15
PACKAGING (PIECES PER PACK)	2 [30 SQ. FT.]

NOTE: CAN BE INSTALLED HORIZONTALLY OR VERTICALLY

A cure for the common project

KuraStone adds the look of stacked stone – without piling on cost



Achieving the look of stacked stone is now easier than ever

Nichiha KuraStone™ reduces material cost and simplifies installation for a double dose of budget help. Its rugged texture and color variation add interest and charm as an accent or as the main attraction. With a variety of panel sizes per pack, the KuraStone™ family of products is a popular, adaptable solution for both interior and exterior projects.

SILL-CHISELED



GRAY



TAN



DESIGN TIP:

**USE NICHHA SILL
WITH ANY PANEL
TO COMPLEMENT
YOUR DESIGN.**



STACKEDSTONE



DESERT



MOUNTAIN

LEDGESTONE



BLUFF

FLAGSTONE



ARIZONA

STACKEDSTONE AND LEDGESTONE

DIMENSIONS (NOM. IN. ~ ACTUAL MM)	6" [H] x (PACKAGED): 25-5/8" [L], 15-3/8" [L], 10-1/4" [L] (150MM [H] x 650MM [L], 390MM [L], 260MM [L])
THICKNESS (NOM. IN. ~ ACTUAL MM)	1-3/8 (35MM)
WEIGHT (LBS. PER SQ. FT.) - STACKEDSTONE	8.9
WEIGHT (LBS. PER SQ. FT.) - LEDGESTONE	9.2
COVERAGE (SQ. FT. PER PANEL)	1.1 (LARGE), .63 (MEDIUM), .43 (SMALL)
PACKAGING (SQ. FT. PER PACK)	5.3
PACKAGING (PIECES PER PACK)	3 LARGE, 2 MEDIUM, 2 SMALL

FLAGSTONE

DIMENSIONS (NOM. IN. ~ ACTUAL MM)	11" [H] x (PACKAGED): 18" [L], x 1-3/8" [T] (280MM [H] x 455MM [L], x 35MM [T])
THICKNESS (NOM. IN. ~ ACTUAL MM)	1-3/8 (35MM)
WEIGHT (LBS. PER SQ. FT.)	9.9
COVERAGE (SQ. FT. PER PANEL)	1.4
PACKAGING (SQ. FT. PER PACK)	6.9
PACKAGING (PIECES PER PACK)	5

STACKEDSTONE CORNER



LEDGESTONE CORNER



STACKEDSTONE BORDER



LEDGESTONE BORDER



FLAGSTONE BORDER



STACKEDSTONE AND LEDGESTONE CORNERS

DIMENSIONS (NOM. IN. ~ ACTUAL MM)	6" [H] x 5" [W] x 11-5/8" [L] [FACE] (150MM [H] x 125MM [W] x 295MM [L] [FACE])
THICKNESS (NOM. IN. ~ ACTUAL MM)	1-3/8" (35MM)
WEIGHT (LBS. PER PIECE) - STACKEDSTONE	6.7
WEIGHT (LBS. PER PIECE) - LEDGESTONE	8.5
COVERAGE (SQ. FT. PER PIECE)	.75
PACKAGING (SQ. FT. PER PACK)	3
PACKAGING (PIECES PER PACK)	4

SILL-CHISELED*

DIMENSIONS (NOM. IN. ~ ACTUAL MM)	1-1/2" [H] [FRONT]/1-3/4" [H] [BACK] x 23-5/8" [L] (38MM [H] [FRONT]/47MM [H] [BACK] x 600MM [L])
THICKNESS (NOM. IN. ~ ACTUAL MM)	2-3/8" (60MM)
WEIGHT (LBS. PER LN. FT.)	3.5
COVERAGE (LN. FT. PER PIECE)	2
PACKAGING (LN. FT. PER PACK)	12
PACKAGING (PIECES PER PACK)	6

*Sills are packaged with 14 installation clips.

*Our Sills are as functional as they are an attractive accent that can complement any of our products.

STACKEDSTONE AND LEDGESTONE BORDERS

DIMENSIONS (NOM. IN. ~ ACTUAL MM)	LARGE - 6" [H] x 17" [L] (150MM [H] x 430MM [L]) SMALL - 6" [H] x 10-1/4" [L] (150MM [H] x 260MM [L])
THICKNESS (NOM. IN. ~ ACTUAL MM)	1-3/8" (35MM)
WEIGHT (LBS. PER PIECE) - STACKEDSTONE	6.2 (LARGE), 3.9 (SMALL)
WEIGHT (LBS. PER PIECE) - LEDGESTONE	6.2 (LARGE), 4.5 (SMALL)
COVERAGE (SQ. FT. PER PIECE)	.69 (LARGE), .42 (SMALL)
PACKAGING (SQ. FT. PER PACK)	3.5 (LARGE), 2.1 (SMALL)
PACKAGING (PIECES PER PACK)	5 (LARGE), 5 (SMALL)

FLAGSTONE BORDERS

DIMENSIONS	LARGE - 11" [H] x 18" [L] x 1-3/8" [T] (NOM. IN. ~ ACTUAL MM) (280MM [H] x 455MM [L] x 35MM [T]) SMALL - 11" [H] x 9" [L] x 1-3/8" [T] (280MM [H] x 227MM [L] x 35MM [T])
WEIGHT (LBS. PER PIECE) -	13.6 (LARGE), 6.8 (SMALL)
EXPOSED COVERAGE (SQ. FT. PER PIECE)	1.4 (LARGE), .68 (SMALL)
PACKAGING (SQ. FT. PER PACK)	6.9 (LARGE), 3.5 (SMALL)
PACKAGING (PIECES PER PACK)	5 (LARGE), 5 (SMALL)

All the things you love about brick

The look you want...without the cost,
without the hassle



Nichiha's Brick Series offers the look and
timeless appeal of traditional brickwork.

The slight variations in color, the stately good looks, even the grout lines; it's all there. And thanks to a proprietary multi-layered coating process the beauty of Nichiha is guaranteed to last. We did leave out two things: the tons of weight and the extra time required to see your project to completion... but we figured they wouldn't be missed.



VINTAGEBRICK™



ALEXANDRIA BUFF



WHITE WASH

VINTAGEBRICK™

DIMENSIONS (NOM. FT. ~ ACTUAL MM)	18" [H] x 6' [L] (455 MM x 1,818 MM)
THICKNESS (NOM. IN. ~ ACTUAL MM)	3/4" (18 MM)
WEIGHT (LBS. PER PANEL)	39.6
WEIGHT (LBS. PER SQ. FT.)	4.4
EXPOSED COVERAGE (SQ. FT. PER PANEL)	9
PACKAGING (PIECES PER PACK)	2 [18 SQ. FT.]

PLYMOUTHBRICK™



CRIMSON



**GET THE CLASSIC LOOK OF
KILN FIRED BRICK WITH
THE MODERN STRENGTH OF
PLYMOUTHBRICK PANELS.**

PLYMOUTHBRICK™

DIMENSIONS (NOM. FT. ~ ACTUAL MM)	18" [H] x 6' [L] (455 MM x 1,818 MM)
THICKNESS (NOM. IN. ~ ACTUAL MM)	5/8" (16 MM)
WEIGHT (LBS. PER PANEL)	35.2
WEIGHT (LBS. PER SQ. FT.)	3.9
EXPOSED COVERAGE (SQ. FT. PER PANEL)	9
PACKAGING (PIECES PER PACK)	2 [18 SQ. FT.]

CANYONBRICK™



SHALE BROWN

CANYONBRICK™

DIMENSIONS (NOM. FT. ~ ACTUAL MM)	18" [H] x 6' [L] (455 MM [H] x 1,818 MM [L])
THICKNESS (NOM. IN. ~ ACTUAL MM)	5/8" (16 MM)
WEIGHT (LBS. PER PANEL)	35.2
WEIGHT (LBS. PER SQ. FT.)	3.9
EXPOSED COVERAGE (SQ. FT. PER PANEL)	9
PACKAGING (PIECES PER PACK)	2 [18 SQ. FT.]

Rock solid solutions...

from the Masonry Series



The grandeur of stone is more attainable than you might think

Nichiha's SandStone is as thrifty as it is elegant. With its subtle color and deep texture, our SandStone begs to be touched and examined more closely. Even after seeing it with their eyes and touching it with their hands, your clients will wonder how you ever managed to stay on budget. We call that a trade secret.

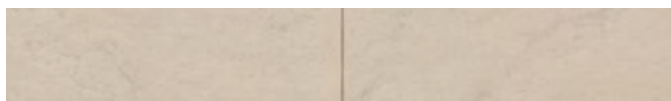
FieldStone, QuarryStone, and CinderBlock add a touch of stately elegance to any project. Covering 9 square feet per panel, our products go up in a fraction of the time required by a crew of masonry contractors. They are also perfect for schools, office buildings, and all kinds of interior environments.



SANDSTONE™



AUTUMN BROWN



DESERT BEIGE



GENTLE GRAY

SANDSTONE™

DIMENSIONS (NOM. FT. ~ ACTUAL MM)	18" [H] x 6' [L] (455MM [H] x 1,818MM [L])
THICKNESS (NOM. IN. ~ ACTUAL MM)	3/4 (18MM)
WEIGHT (LBS. PER PANEL)	39.68
WEIGHT (LBS. PER SQ. FT.)	4.41
EXPOSED COVERAGE (SQ. FT. PER PANEL)	9
PACKAGING (PIECES PER PACK)	2 [18 SQ. FT.]

FIELDSTONE™



BRONZE MIST



PEPPER SAND

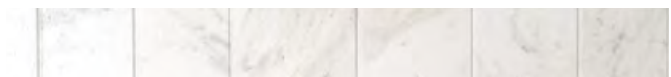
FIELDSTONE™

DIMENSIONS (NOM. FT. ~ ACTUAL MM)	18" [H] x 6' [L] (455MM [H] x 1,818MM [L])
THICKNESS (NOM. IN. ~ ACTUAL MM)	5/8 (16MM)
WEIGHT (LBS. PER PANEL)	35.27
WEIGHT (LBS. PER SQ. FT.)	3.92
EXPOSED COVERAGE (SQ. FT. PER PANEL)	9
PACKAGING (PIECES PER PACK)	2 [18 SQ. FT.]

QUARRYSTONE™



DESERT SLATE



GRAY MIST

QUARRYSTONE™

DIMENSIONS (NOM. FT. ~ ACTUAL MM)	18" [H] x 6' [L] (455MM [H] x 1,818MM [L])
THICKNESS (NOM. IN. ~ ACTUAL MM)	5/8 (16MM)
WEIGHT (LBS. PER PANEL)	35.27
WEIGHT (LBS. PER SQ. FT.)	3.92
EXPOSED COVERAGE (SQ. FT. PER PANEL)	9
PACKAGING (PIECES PER PACK)	2 [18 SQ. FT.]

CINDERBLOCK™



BROWN



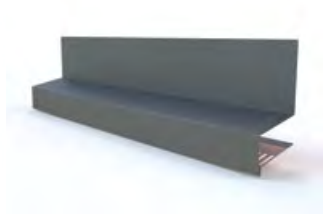
GRAY

CINDERBLOCK™

DIMENSIONS (NOM. FT. ~ ACTUAL MM)	18"[H] x 6'[L] x 7/8"[T] (455MM [H] x 1,818MM [L])
THICKNESS (NOM. IN. ~ ACTUAL MM)	7/8 (21MM)
WEIGHT (LBS. PER PANEL)	48.2
WEIGHT (LBS. PER SQ. FT.)	5.4
EXPOSED COVERAGE (SQ. FT. PER PANEL)	9
PACKAGING (PIECES PER PACK)	2 [18 SQ. FT.]

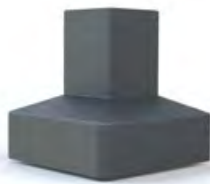
The details make the design...

ensure your project stands out by using our
Essential Flashing System.



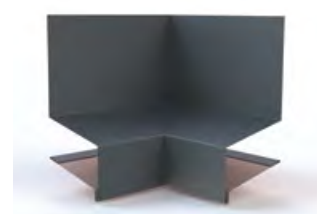
STARTER FLASHING

10MM FTD 4788



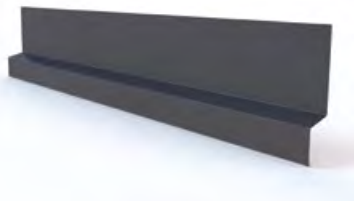
STARTER FLASHING OUTSIDE CORNER

10MM FTD 4788 B



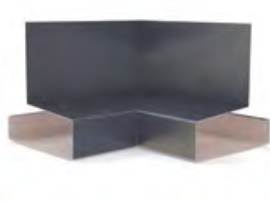
STARTER FLASHING INSIDE CORNER

10MM FTD 4788 D



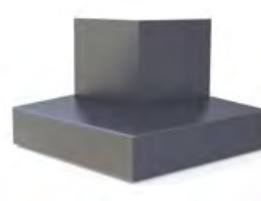
OVERHANG FLASHING

10MM JOH 7288



OVERHANG FLASHING
INSIDE CORNER

10MM JOH 7288 D



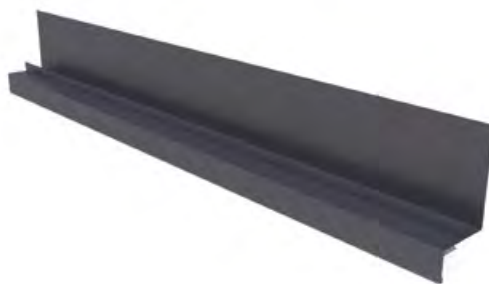
OVERHANG FLASHING
OUTSIDE CORNER

10MM JOH 7288 B



OVERHANG FLASHING CLIP

10MM JOH 7288 S



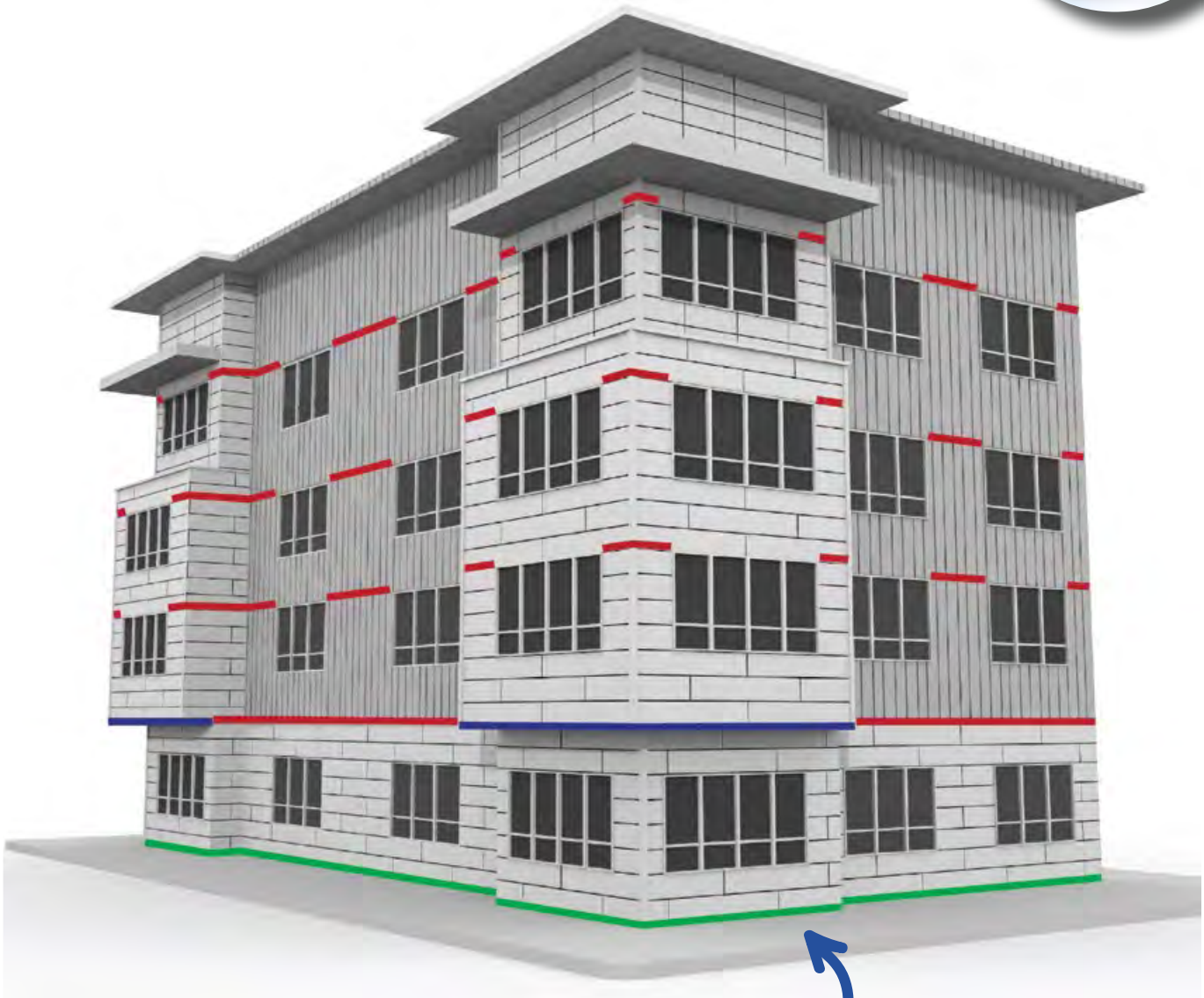
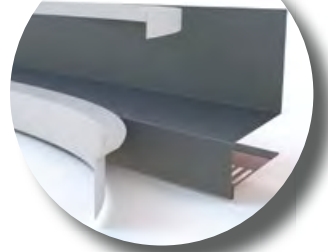
COMPRESSION JOINT FLASHING – NOT FOR USE OVER OPENINGS

10MM FTC 3588 R

Note: Each component of the Essential Flashing System is sold separately.

The Essential Flashing System includes Nichiha accessories needed to complete the system and ensure a clean, polished look. In order to achieve your design intent, it is important to consider the smallest of details. Our Essential Flashing System allows you to easily complete your project with the highest level of precision.

NICHIHA TAKES ACCESSORY PROTECTION TO THE NEXT LEVEL WITH A REMOVABLE FILM LAYER. ONCE INSTALLED, SIMPLY PEEL OFF THE FILM TO REVEAL BLEMISH-FREE FIXTURES.



OUR STARTER FLASHING SERVES A DUAL ROLE - ENSURING YOUR PROJECT IS POLISHED TO PERFECTION AND OPERATING AS A BUG SCREEN TO KEEP ANNOYING PESTS AWAY.

Don't sweat the small stuff...we already have

Nichiha's unique installation hardware and accessories ensure that taking your vision from the drawing board to reality is a cinch.



ULTIMATE CLIP w/ JOINT TAB ATTACHMENT

10MM JEL 777

Compatible with 16mm (5/8") panels

10MM JEL 787
Compatible with 18 & 21mm (3/4" & 7/8") panels



ULTIMATE STARTER TRACK (10')

10MM FA 700



VERTICAL STARTER TRACK (10')

5MM FA 710 T



SINGLE FLANGE SEALANT BACKER (6.5')

10MM FHK 1017 R



DOUBLE FLANGE SEALANT BACKER (10')

10MM FH 1020 R



CORRUGATED SHIM (4')

5MM FS 1005

10MM FS 1010



CORNERS

18"[H] x 3-1/2"[FACE] RETURNS



KURASTONE™ CLIP

10MM JE 720CA



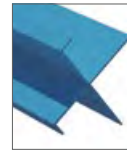
FINISH CLIP

10MM JE 310

Completing the system just got easier...



For our popular panels such as VintageWood, we took it a step further by color matching all of our trim profiles to have in stock for fast delivery.



Thanks to our Color Xpressions system, Nichiha can customize our trim to match any color you use on our Illumination Panels.

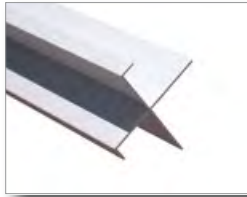


Nichiha's customized Tamlyn trim adds the finishing touches to any project. It's not only simple and sleek, but also a cost-effective and time-efficient solution to finishing corners, windows and door trims. Choose from 6 trim profiles specifically designed for Nichiha's Architectural Wall Panels. Tamlyn trim provides weather-resistant coatings so you can expect low maintenance and long-lasting beauty.



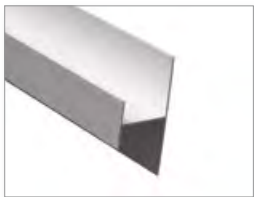
CORNER KEY

DIMENSIONS (NOM. FT. ~ ACTUAL MM)	3" x 10' (76.2MM x 3,030MM)
WEIGHT (LBS. PER PIECE)	3.89
PACKAGING (LN. FT. PER PACK)	50



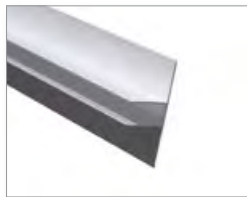
OPEN OUTSIDE CORNER

DIMENSIONS (NOM. FT. ~ ACTUAL MM)	2.96" x 10' (75MM x 3,030MM)
WEIGHT (LBS. PER PIECE)	2.98
PACKAGING (LN. FT. PER PACK)	50



H-MOLD

DIMENSIONS (NOM. FT. ~ ACTUAL MM)	2" x 10' (50.8MM x 3,030MM)
WEIGHT (LBS. PER PIECE)	2.42
PACKAGING (LN. FT. PER PACK)	50



BEAD REVEAL

DIMENSIONS (NOM. FT. ~ ACTUAL MM)	.5" x 10' (12.7MM x 3,030MM)
WEIGHT (LBS. PER PIECE)	2.46
PACKAGING (LN. FT. PER PACK)	50



J-MOLD

DIMENSIONS (NOM. FT. ~ ACTUAL MM)	.375" x 10' (9.5MM x 3,030MM)
WEIGHT (LBS. PER PIECE)	1.4
PACKAGING (LN. FT. PER PACK)	50



L-TRIM

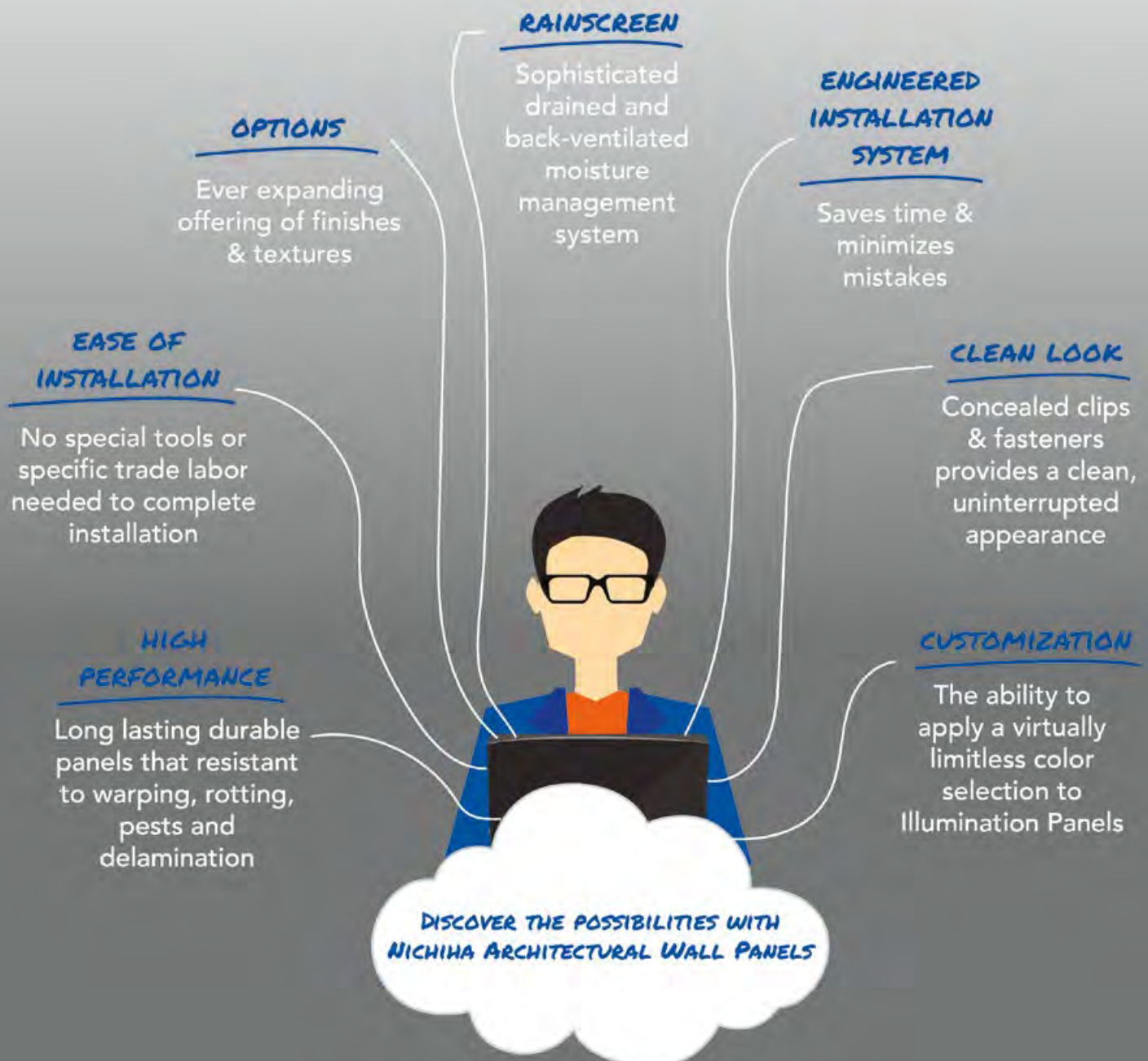
DIMENSIONS (NOM. FT. ~ ACTUAL MM)	1" x 10' (25.4MM x 3,030MM)
WEIGHT (LBS. PER PIECE)	1.2
PACKAGING (LN. FT. PER PACK)	50

OUR TRIM GIVES YOU OPTIONS - CUSTOMIZE WITH COLOR OR GO WITH OUR STANDARD ANODIZED FINISH.

We've taken fiber cement way beyond lap siding

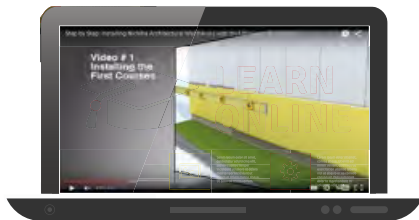
Our lap siding is the best in the business...but our Architectural Wall Panels have changed the game

With Nichiha, the possibilities are virtually limitless...a broad range of aesthetic profiles, quick installation and an innovative moisture management system can help bring your most ambitious visions to life. Our **Architectural Wall Panels** set the bar high with an elevated offering of features and benefits...



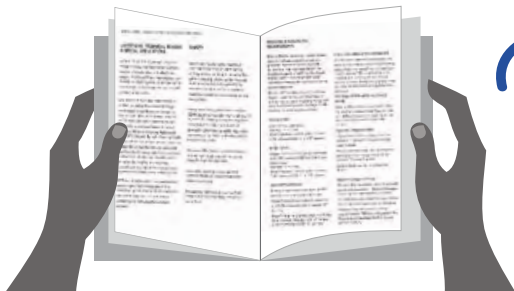
Never Underestimate the Power of Really Good Tools

Whether you are an architect, a builder or a contractor, Nichiha wants to ensure that you have all the information you need to make your project go as smoothly as possible. The way we see it, we are partners. Our website offers a comprehensive collection of technical information, installation videos, Architectural details, in-depth specifications and everything you'll ever need to know about installing Nichiha products.



**WATCH OUR INSTALLATION INSTRUCTIONS COME TO LIFE -
CHECK OUT OUR INSTALLATION VIDEOS TODAY!
WWW.NICHIHA.COM/AWPINSTALLVIDEOS**

OUR IN-HOUSE TECHNICAL TEAM IS HERE TO ASSIST. IF YOU HAVE QUESTIONS, COMMENTS OR CONCERNS, CALL US AT 1-866-424-4421 OR EMAIL US AT TECHNICALSERVICES@NICHIHA.COM.



**TAKE AN EVEN DEEPER DIVE AND DOWNLOAD OUR
IN-DEPTH INSTALLATION GUIDES.
[HTTP://WWW.NICHIHA.COM/RESOURCES/INSTALLATION](http://WWW.NICHIHA.COM/RESOURCES/INSTALLATION)**

**NICHIHA PRODUCTS
ARE EASY TO INSTALL...
YOU JUST NEED A FEW
BASIC TOOLS TO
GET STARTED.***



LEVEL



RUBBER
Mallet



ELECTRIC
DRILL



CORROSION
RESISTANT
FLATHEAD
SCREWS



SAW WITH
FIBER CEMENT
BLADES

*Visit nichiha.com for comprehensive installation requirements for each product.

The Power of Possibilities and Partnerships

Your vision is unique, and Nichiha wants to offer you the power of possibilities and partnerships to help your project move from conception to completion. Our ever-expanding offerings of textures and finishes lift buildings to new and unexpected places. Nichiha also values our partnerships and is proud to work with our dedicated partners across the country. Discover the power of possibilities and partnerships with Nichiha.



Get social with Nichiha. Share your project photos, thoughts, and inspiration with us on social media. We would love to hear from you.
Use **#NichiChat** and get social today!

NICHIHA WARRANTIES

- Illumination, TuffBlock, and Ribbed Panels – 50-year limited warranty* on panels, 15-year limited warranty* on finish.
 - Nichiha Block, Stone, Brick, RoughSawn, VintageWood™, IndustrialBlock, and EmpireBlock™ Panels – 50-year limited warranty* on panels, 15-year limited warranty* on finish.
 - KuraStone™ Panels – 50-year limited warranty* on panels, 10-year limited warranty* on finish.
 - Metal Trim: TAMLYN warrants defective-free products for a period of 10 years for the original purchaser. Please visit tamlyn.com for detailed information on terms, conditions and limitations.
- * See Nichiha warranties for detailed information on terms, conditions and limitations. Visit nichiha.com for easy downloadable warranties or call toll-free 1.866.424.4421 for a copy.

Nichiha MSDS is available at nichiha.com, at your local NICHIIHA dealer or call NICHIIHA direct, toll-free 1.866.424.4421.

Certification
& testing:



Report
No. EC-58



Report
No. FL12875



Report
No. 13083-R



PER-14088



Silica Dust Warning: NICHIIHA products may contain some amounts of crystalline silica [a.k.a. sand, silicon dioxide], which is a naturally occurring mineral. The amount will vary from product to product. Inhalation of crystalline silica into the lungs and repeated exposure to silica can cause health disorders, such as silicosis, lung cancer, or death depending upon various factors. To be conservative, Nichiha recommends that whenever cutting, sawing, sanding, sniping or abrading the product, users observe Safety Instructions. For further information or questions, please consult the MSDS, your employer, or visit www.osha.gov/SLTC/silicacrystalline/index.html and www.cdc.gov/niosh/topics/silica. The MSDS for Nichiha products are available at www.nichiha.com, at your local Nichiha dealer or through Nichiha directly at 1.866.424.4421. FAILURE TO ADHERE TO OUR WARNINGS, MSDS, AND OTHER INSTRUCTION MAY LEAD TO SERIOUS PERSONAL INJURY OR DEATH.

ARCHITECTURALBLOCK, CANYONBRICK, EMPIREBLOCK, FIELDSTONE, ILLUMINATION, INDUSTRIALBLOCK, KURASTONE, PLYMOUTHBRICK, QUARRYSTONE, ROUGHSAWN, SANDSTONE, TUFFBLOCK, THE POWER OF POSSIBILITIES, VINTAGEBRICK and VINTAGEWOOD are trademarks of Nichiha USA, Inc.



the power of possibilities™

6465 E. Johns Crossing, Suite 250, Johns Creek, GA 30097 · (770) 805.9466 · www.nichiha.com

NOTE: Printed material may not accurately depict actual product color. ©2015 Nichiha USA, Inc. All rights reserved. Printed in the USA. NLC 6K 9.15 BSB